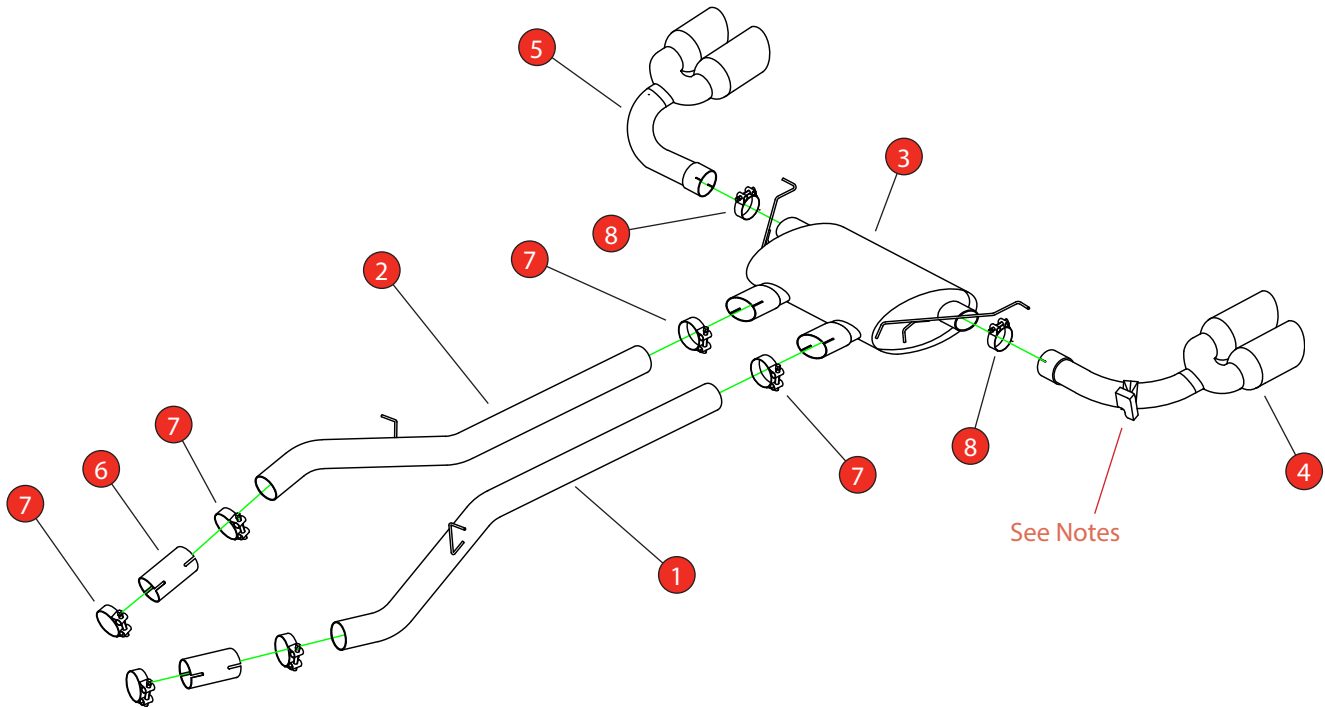


Car	BMW X3 M40i MHEV (G01)	Part No.	SBM112
Year	2021-Current	Fit Kits	509FK
Notes	Where not supplied use original fittings. Original system requires cutting	Features	Pipe Diameter:- 70mm

Estimated Fitting Time: 1 Hours 30 Minutes



NO.	PART NO.	DESCRIPTION	QTY
1	987BM	L/H Rear Link Pipe	1
2	988BM	R/H Rear Link Pipe	1
3	989BM	Rear Silencer	1
4	990BM	L/H Polished Daytona Trims with Valve	1
5	991BM	R/H Polished Daytona Trims	1
Fit Kit			
6	AD79	Adaptor	2
7	Z016.10055	68-73mm Clamp	6
8	Z016.10064	63-68mm Clamp	2
9	Z017.12783	BMW Spring	1
10	Z024.11135	Valve Actuator	1

DATE	24/07/2025
ISSUE	00
AUTHORISED	G O'Shea

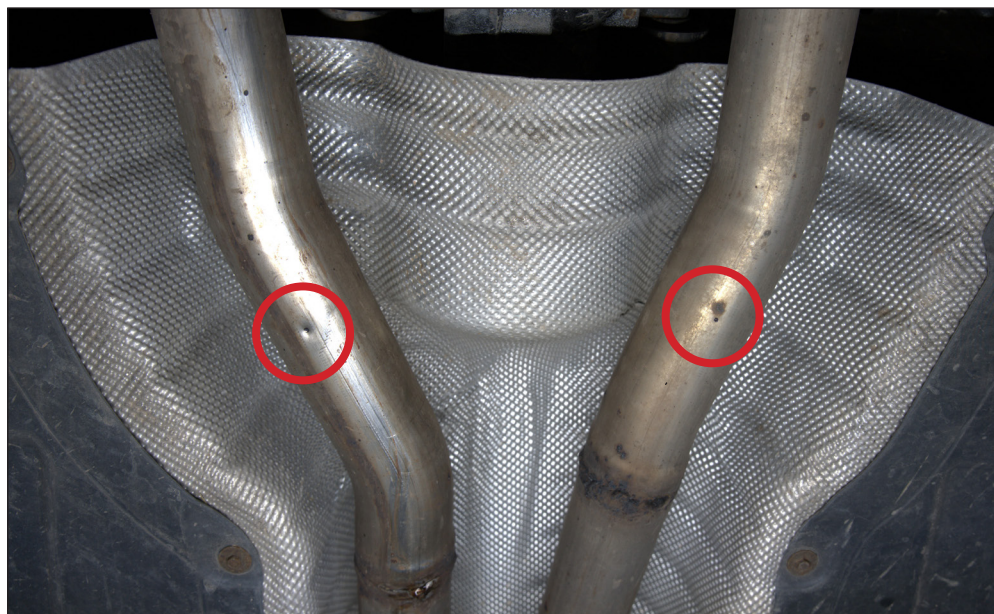
NOTE: ENSURE SCORPION SYSTEM IS CLEAR OF MOVING PARTS AND ALL ORIGINAL FUNCTIONS WORK CORRECTLY.



STAY CONNECTED TO RED POWER.

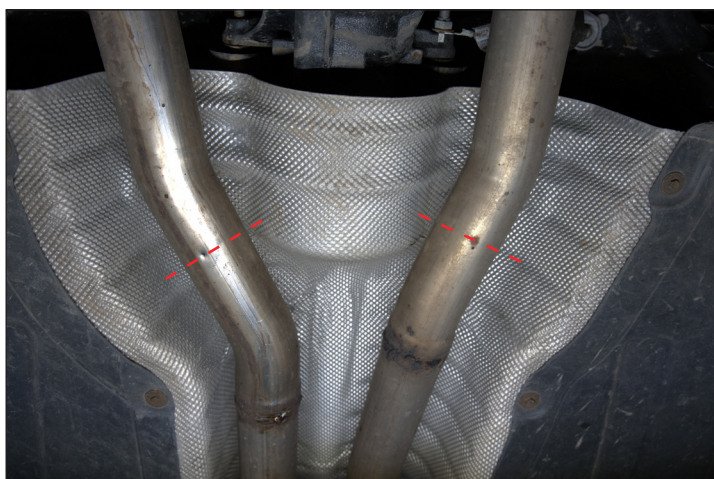
Car	BMW X3 M40i MHEV (G01)	Part No.	SBM112
Year	2021-Current	Fit Kits	509FK
Notes	Where not supplied use original fittings. Original system requires cutting	Features	Pipe Diameter:- 70mm

Estimated Fitting Time: 1 Hours 30 Minutes



Cutting Instructions:

The original system requires cutting in two places at the rear diff. There is a dimple on each pipe, cut at that point and clean up the edges.



STAY CONNECTED TO RED POWER.

Car	BMW X3 M40i MHEV (G01)	Part No.	SBM112
Year	2021-Current	Fit Kits	509FK
Notes	Where not supplied use original fittings. Original system requires cutting	Features	Pipe Diameter:- 70mm

Estimated Fitting Time: 1 Hours 30 Minutes



A) On the scorpion product fit the fixing bow (Item No. 9) into the valve and use the actuator (Item No. 10) to secure the bow in place.

B) Use the M6 bolts and washers to fasten the actuator to the valve ensuring the two straights on the fixing bow fit between the grooves on both of the posts.

